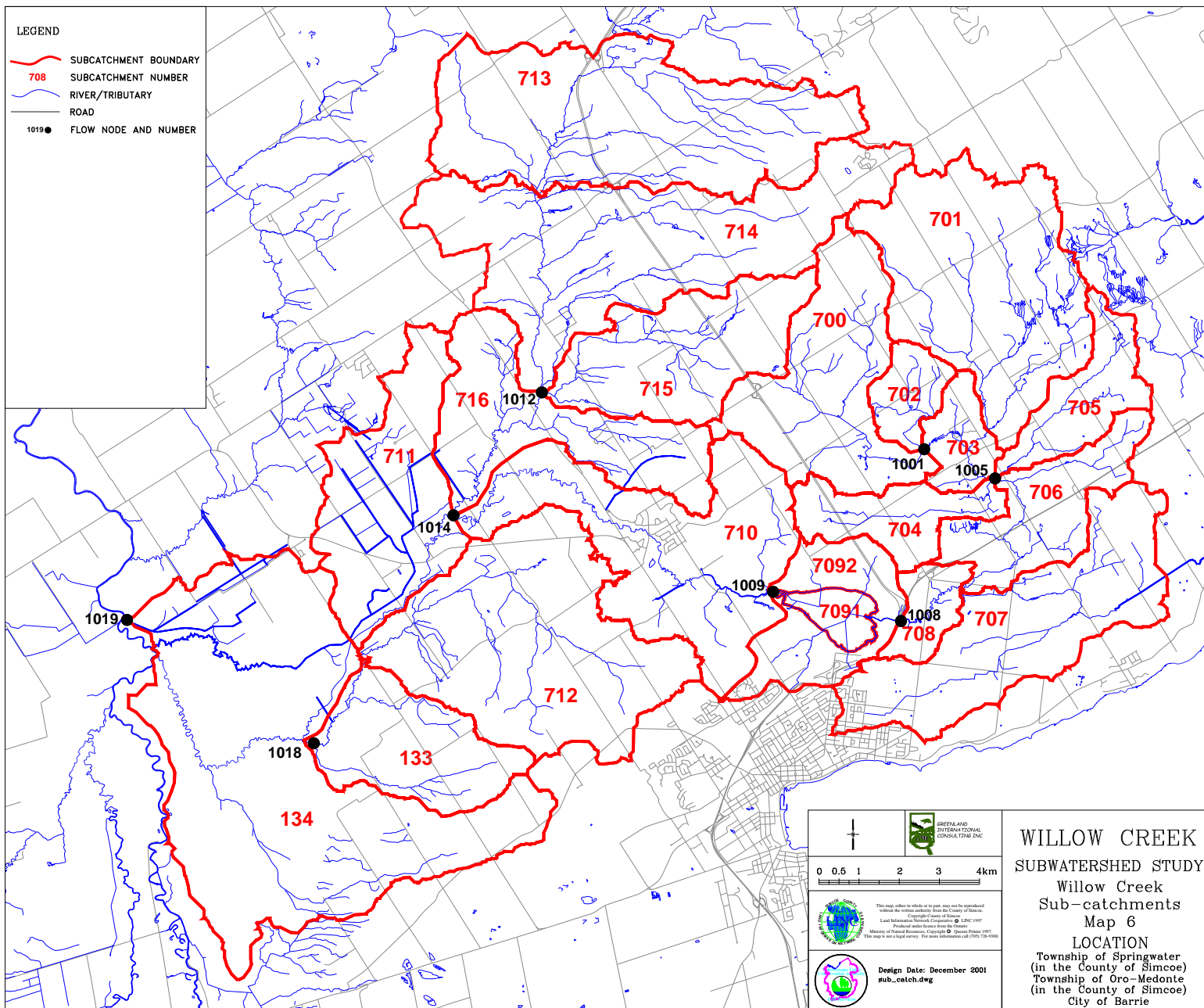




LEGEND

- SUBCATCHMENT BOUNDARY
- 708 SUBCATCHMENT NUMBER
- RIVER/TRIBUTARY
- ROAD
- 1019 ● FLOW NODE AND NUMBER






0 0.5 1 2 3 4km



GREENLAND
INTERNATIONAL
CONSULTING INC.




This map, either in whole or in part, may not be reproduced without the written authority from the County of Simcoe.

Local Natural Environment Centre of Simcoe, June 1997

Produced under license from the Ontario Ministry of Natural Resources, Copyright © Queen's Printer 1997.

This map is not a legal survey. For more information call (705) 736-6500.

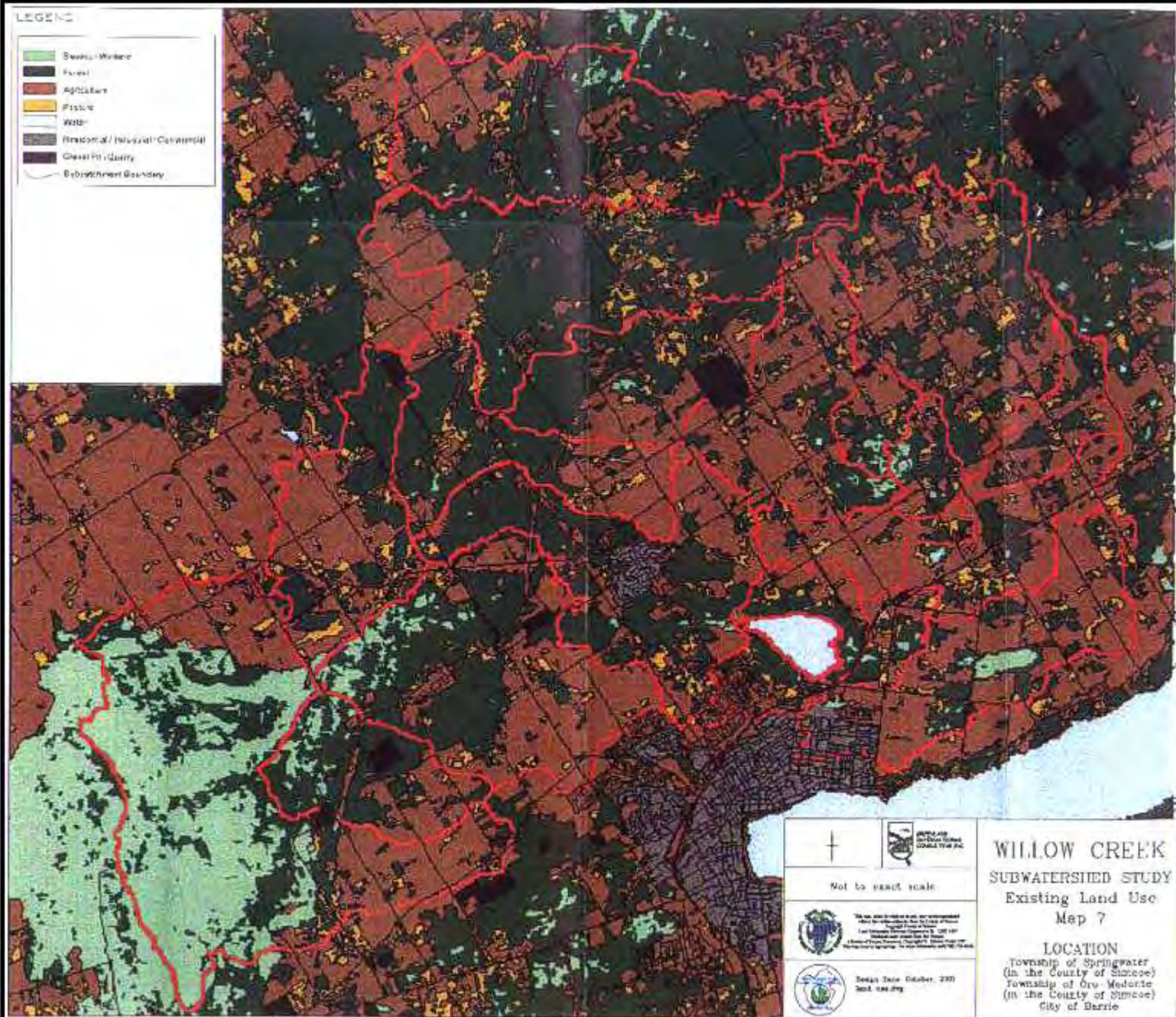


Design Date: December 2001
sub_catch.dwg

WILLOW CREEK
SUBWATERSHED STUDY
 Willow Creek
 Sub-catchments
 Map 6
LOCATION
 Township of Springwater
 (in the County of Simcoe)
 Township of Oro-Medonte
 (in the County of Simcoe)
 City of Barrie

LEGEND

-  Swamp/Wetland
-  Forest
-  Agriculture
-  Pasture
-  Water
-  Residential/Industrial/Commercial
-  Open Field/Grass
-  Subwatershed Boundary



Not to exact scale



Design Date: October, 2001
Scale: 1:50,000



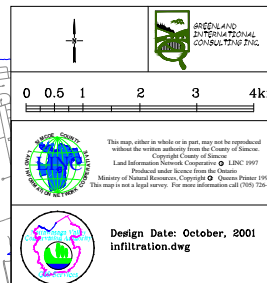
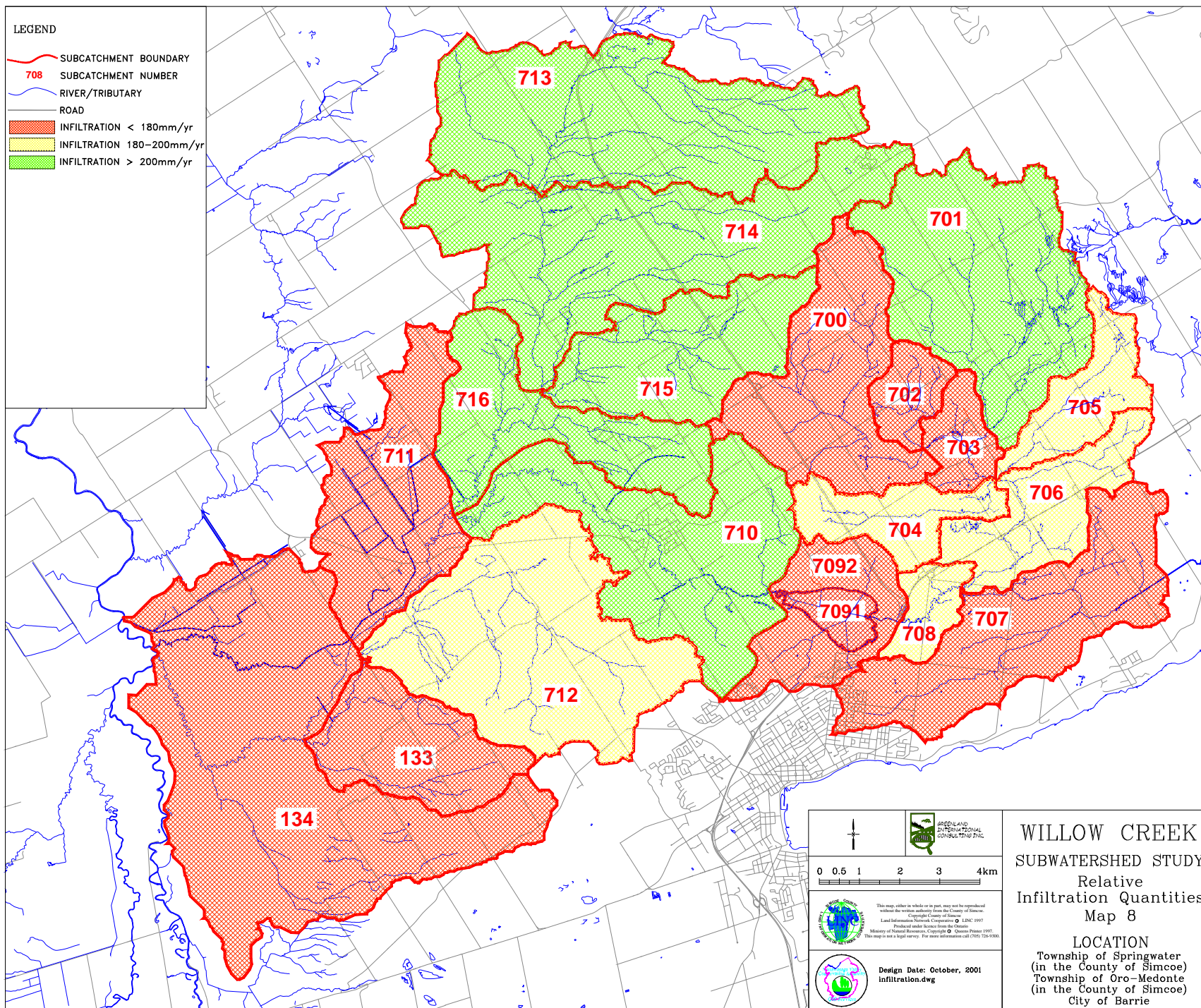
This map was prepared by the Ministry of the Environment, in cooperation with the City of Barrie and the County of Simcoe. It is a product of the Willow Creek Subwatershed Study. The map is for informational purposes only and should not be used for legal or regulatory purposes. For more information, contact the Ministry of the Environment at 1-800-387-3535.

WILLOW CREEK SUBWATERSHED STUDY Existing Land Use Map 7

LOCATION
Township of Springwater
(in the County of Simcoe)
Township of Oro-Medonte
(in the County of Simcoe)
City of Barrie

LEGEND

- SUBCATCHMENT BOUNDARY
- 708 SUBCATCHMENT NUMBER
- RIVER/TRIBUTARY
- ROAD
- INFILTRATION < 180mm/yr
- INFILTRATION 180–200mm/yr
- INFILTRATION > 200mm/yr



This map, either in whole or in part, may not be reproduced without the written authority from the County of Simcoe.
 Copyright County of Simcoe
 Land Information Network Cooperative © LINIC 1997
 Produced under license from the Queen's
 Ministry of Natural Resources, Copyright © Queen's Printer 1997.
 This map is not a legal survey. For more information call (905) 709-1000.



Design Date: October, 2001
 Infiltration.dwg

WILLOW CREEK SUBWATERSHED STUDY Relative Infiltration Quantities Map 8

LOCATION
 Township of Springwater
 (in the County of Simcoe)
 Township of Oro-Medonte
 (in the County of Simcoe)
 City of Barrie